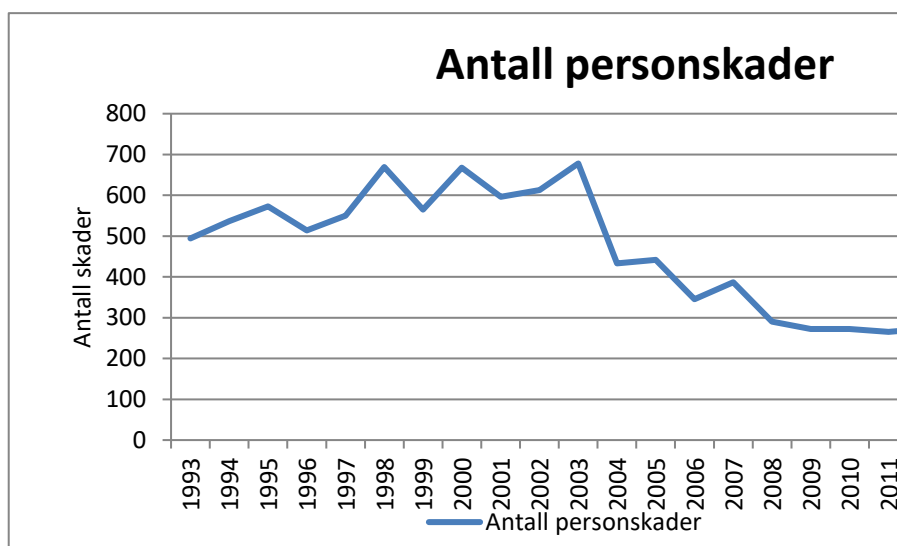
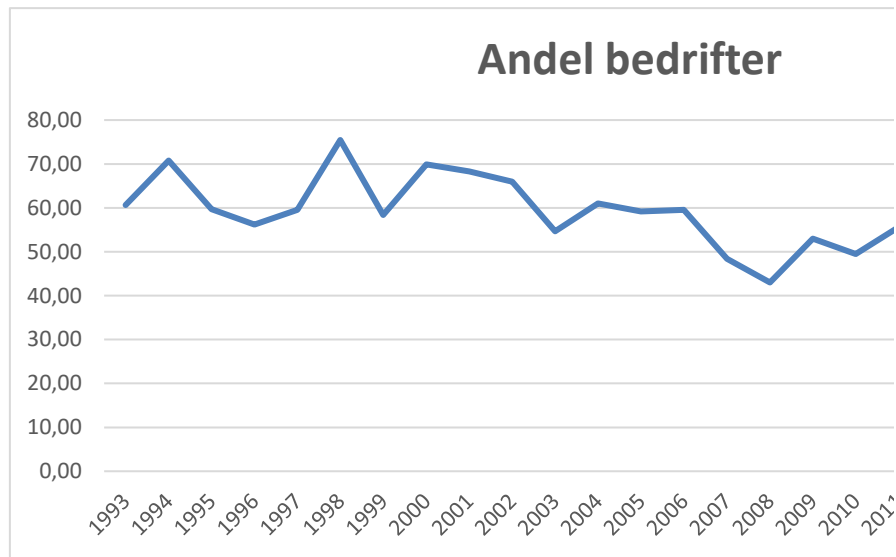
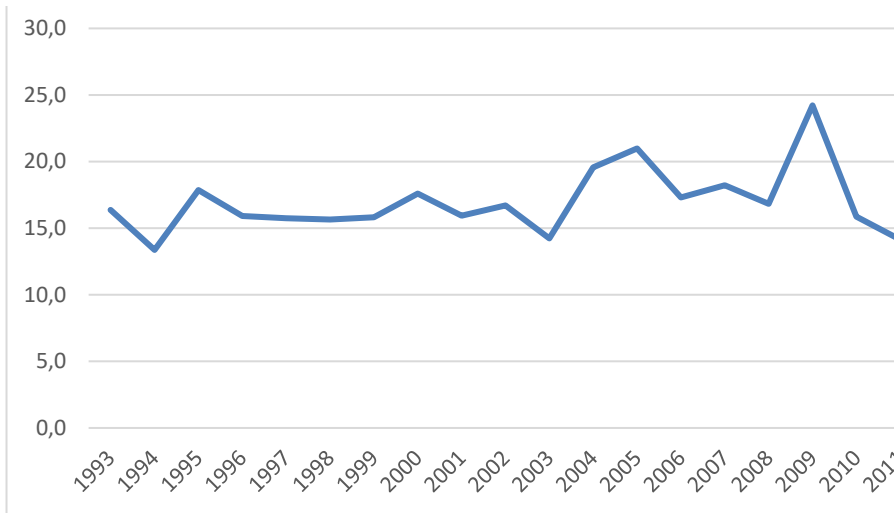


SYKEFRAVÆR			
ÅR	Sykefravær i %	Sykefravær i timer	Antall personskader
1993	4,99	956003	494
1994	4,23	807717	537
1995	5,07	854897	573
1996	4,98	927466	514
1997	5,57	1202210	550
1998	5,30	1512300	669
1999	6,13	2026128	565
2000	6,61	2158855	668
2001	7,01	2507244	596
2002	7,43	2375350	613
2003	6,33	2379551	678
2004	6,20	2308235	433
2005	5,72	2214861	442
2006	5,87	2234320	345
2007	6,88	2611653	387
2008	6,03	1988985	290
2009	6,22	2240516	272
2010	5,69	2172095	272
2011	4,65	1541796	265
2012	4,93	1836824	273
2013	5,15	1976399	266
2014	4,82	2059387	251
2015	4,92	2102113	262
2016	4,57	1952572	180
2017	4,75	1994617	217
2018	4,65	2355146	306

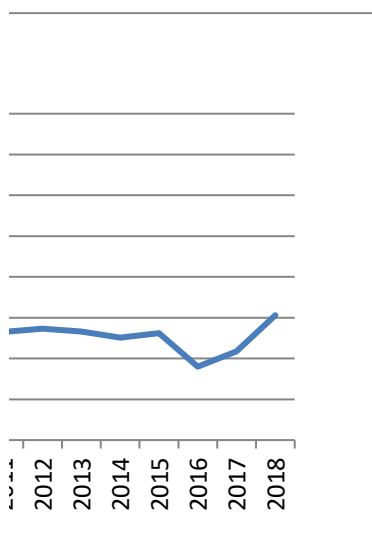


Alvorlighetsgradverdi A-Verd

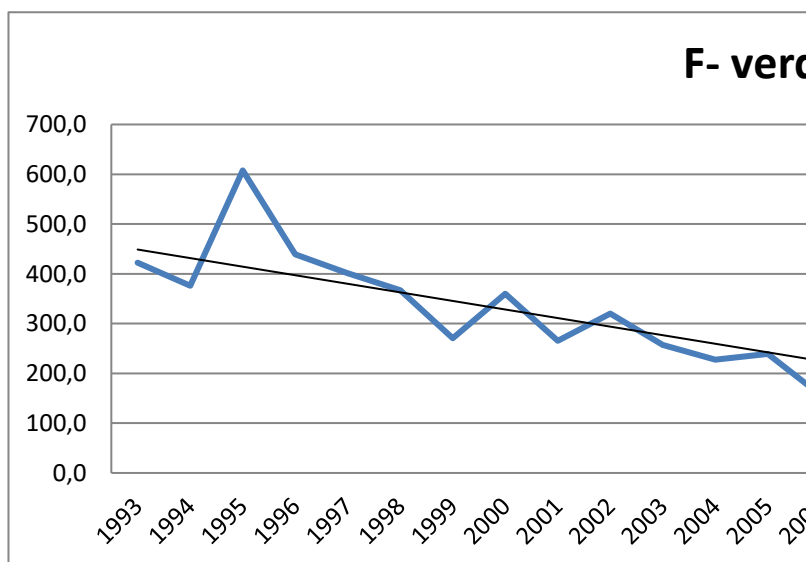


YRKESKADER

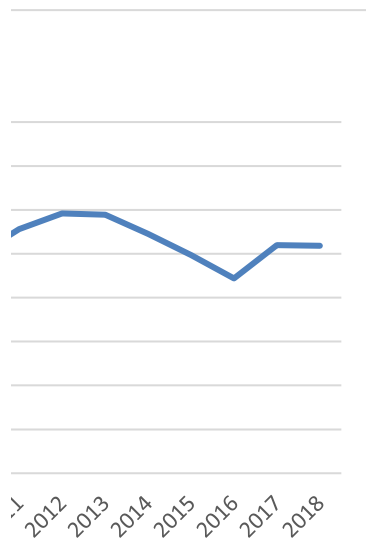
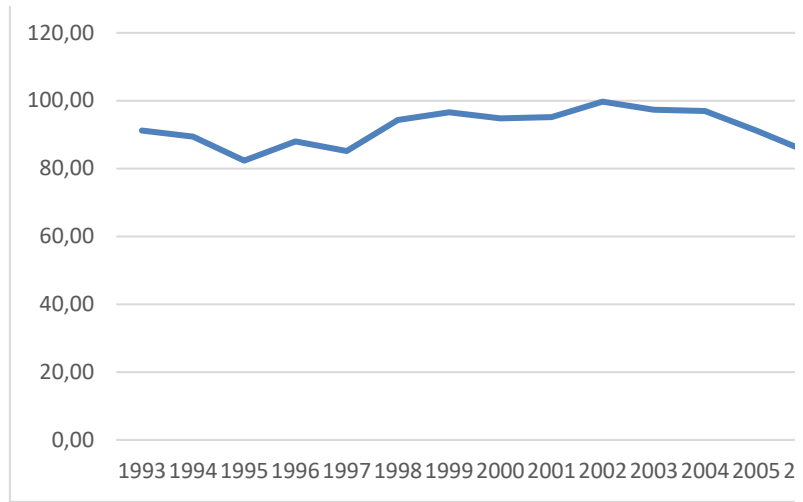
Antall fraværsdager	Antall fraværstimer	Hyppighet H-Verdi	Fravær i %	Fraværsværdi F-Verdi
8093	60701	25,76	0,32	422,1
7184	53880	28,12	0,28	376,2
10242	76871	34,00	0,46	607,7
8182	61365	27,58	0,33	439,1
8656	64920	25,50	0,30	401,4
10468	78510	23,45	0,28	367,0
8946	67095	17,09	0,20	270,5
11750	88125	20,45	0,27	359,7
9505	71287	16,65	0,20	265,6
10242	76815	19,17	0,24	320,3
9657	72427	18,05	0,19	257,1
8476	63576	11,63	0,17	227,6
9263	69472	11,42	0,18	239,3
5974	44002	9,06	0,12	156,9
7050	51352	10,19	0,14	185,7
4897	36592	8,80	0,11	148,0
6587	44456	7,55	0,14	182,9
4315	31972	7,13	0,08	113,1
3745	28087	7,99	0,08	113,0
3811	28158	7,33	0,08	102,3
3450	25875	6,93	0,07	89,9
3595	26959	6,21	0,07	89,0
4750	35621	6,13	0,08	111,2
2059	15443	5,05	0,04	57,8
4432	33240	5,17	0,08	105,5
<b>3373</b>	<b>25298</b>	<b>6,04</b>	<b>0,05</b>	<b>66,6</b>



di

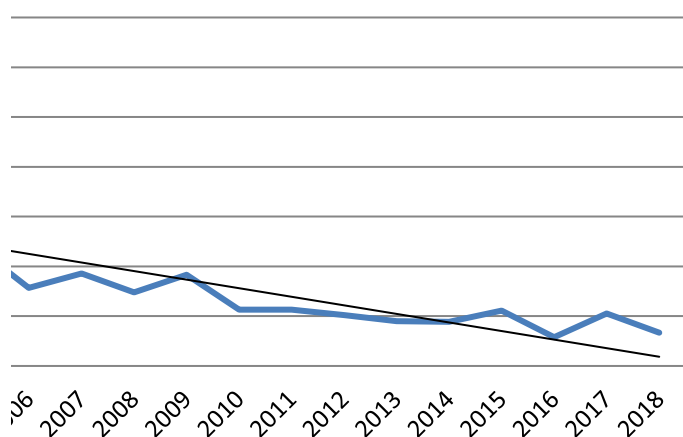


Andel ans



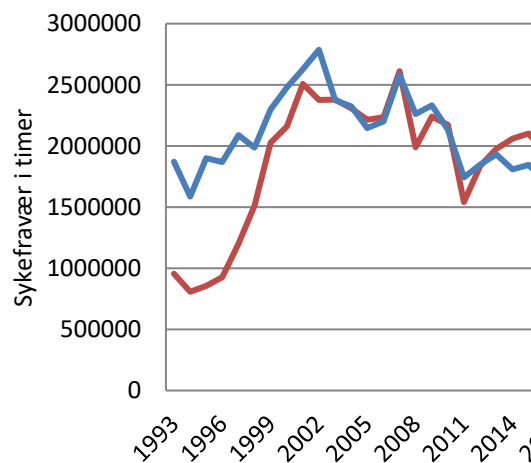
Alvorlighetsgradverdi A-Verdi	ANDEL BEDRIFTER				
	Antall bedrifter	Antall svart	Andel bedrifter	Antall ansatte	Antall svart
16,4	150	91	60,67	15886	14488
13,4	147	104	70,75	16932	15139
17,9	181	108	59,67	15481	12743
15,9	203	114	56,16	15703	13815
15,7	220	131	59,55	16390	13965
15,7	216	163	75,46	19412	18303
15,8	226	132	58,40	19852	19170
17,6	206	144	69,90	19880	18850
16,0	205	140	68,29	22180	21115
16,7	203	134	66,00	18917	18864
14,2	205	112	54,63	22162	22758
19,6	205	125	61,00	22162	21972
21,0	206	122	59,22	24807	22634
17,3	210	125	59,52	21942	18654
18,2	215	104	48,37	23593	22401
16,8	215	94	43,00	19353	15446
24,2	220	117	53,00	23174	21154
15,9	214	106	49,50	23100	22313
14,1	215	120	55,58	20443	19390
14,0	206	122	59,22	22220	21720
13,0	219	129	58,90	22735	21772
14,3	189	103	54,50	23839	20456
18,1	187	93	49,73	25207	24845
11,4	232	103	44,40	26673	21035
20,4	231	120	51,95	25342	24774
11,0	243	126	51,85		29811

di

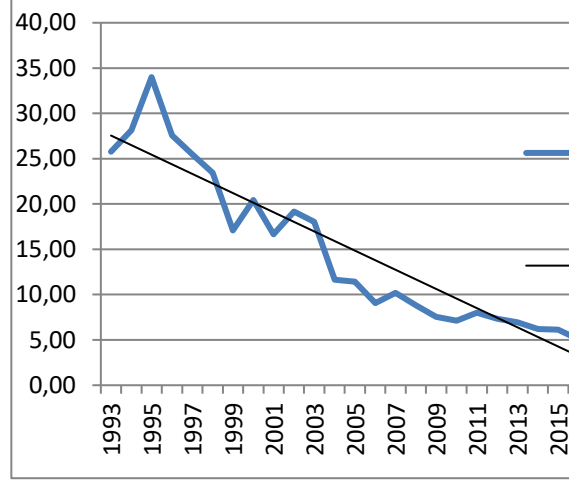
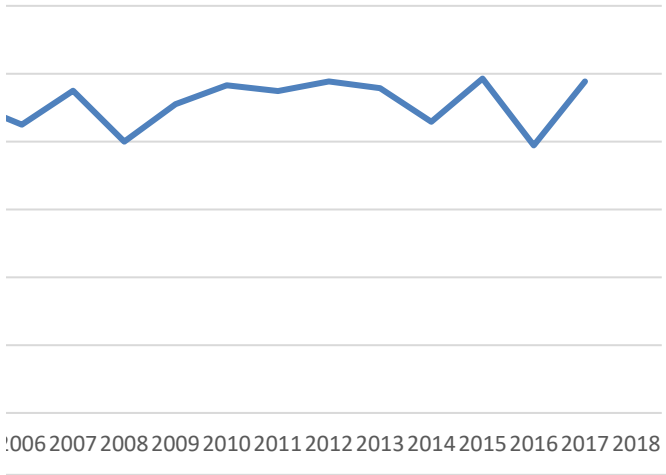


satte

Sykefraværet



Hyppighet H-Verdi



**Andel ansatte**

91,20  
89,41  
82,31  
87,98  
85,20  
94,29  
96,56  
94,82  
95,19  
99,72  
97,38  
97,00  
91,24  
85,00  
95,00  
80,00  
91,00  
96,59  
94,84  
97,74  
95,76  
85,81  
98,56  
78,86  
97,76

